



**USF World**

**GLOBAL STEWARDS**

September 2023

# AGENDA



## Highlights

New International Health and Safety Insurance with Lots More Support Services (International SOS)

New International Student Success Services

New Programs and Opportunities for Visiting Scholars and Researchers

New Virtual Global Exchange Learning Community for Faculty

New Awards and Accolades

## Unit Updates

International Admissions

International Student Success

International Services

Education Abroad

Virtual Global Learning

Research and Collaboration

International Community Relations



# UPCOMING EVENTS & OPPORTUNITIES



UNIVERSITY of  
**SOUTH FLORIDA**

# Don't Forget to RSVP....

*You are cordially invited*

*To join President Law, Provost Mohapatra  
and other special guests for the 2023*

## FULBRIGHT CELEBRATION BREAKFAST



Register  
Here by  
October 10

Space is Limited

October 18, 2023

8:30 - 9:00 a.m. Registration & Breakfast Buffet

9:00 - 10:30 a.m. Awards Ceremony & Special Remarks

Judy Genshaft Honors College | Atrium  
University of South Florida, Tampa Campus

*Guest speaker Dr. Allan E. Goodman is the CEO of the Institute of International Education which promotes the exchange of scholars and students, and administers the Fulbright program sponsored by the U.S. Department of State. He holds a Ph.D. in Government from Harvard, an M.P.A from the John F. Kennedy School of Government, and a B.S. from Northwestern University, and is the recipient of honorary degrees from Canadian, European, Japanese, U.K. and U.S. universities.*



Sponsored by USF World and the Judy Genshaft Honors College  
For reasonable accommodations please email [usfworldevents@usf.edu](mailto:usfworldevents@usf.edu)

# INTERNATIONAL EDUCATION MONTH

2023 Events Calendar

Every year the University of South Florida hosts an entire month of events as part of International Education Week, a joint initiative between the U.S. Department of Education and the U.S. Department of State. International Education Week brings to life the benefits of international education and exchange worldwide.

Check our Facebook, Instagram, and LinkedIn accounts for regular IEM event updates. For a complete list of International Education Month events, please visit:  
[tinyurl.com/USF-IEM](https://tinyurl.com/USF-IEM)

## Wednesday, November 1

**RPCV Panel Engagement Event**  
10:00 am -11:30 am  
Tampa Campus | Global Student Hub Lobby

**Race to the Airport**  
Nov 1 -3, 2023  
Sarasota Campus | SMC B-128

## Thursday, November 2

**USF Education Abroad & USF Dining International Flavors Tabling**  
6:00pm-9:00pm  
St. Petersburg Campus | The Nest

## Tuesday, November 7

**Bull Market Tabling Event**  
10:00 am -1:00 pm  
St. Petersburg Campus | Harborlawn

**Around the World Trivia Night**  
6:00 pm-8:00 pm  
Tampa Campus

## Wednesday, November 8

**Peace Corps Application Workshop Info Session**  
10:00am-1:00pm  
Tampa Campus | Global Student Hub FAO 011

## Thursday, November 9

**Education Abroad International Showcase**  
10:00 am-2:00 pm  
St. Petersburg Campus | Lynn Pippenger Hall

**International Night USF Volleyball**  
6:00 pm  
Tampa Campus | The Coral

## Tuesday, November 14

**Sarasota Sister City Showcase**  
Sarasota Campus | SMC Selby Auditorium

## Wednesday, November 15

**Peace Corps Prep Informational Session**  
3:00 pm-4:00 pm  
Tampa Campus | Global Student Hub FAO 011

**Eat Around the World**  
12— 3 p.m.  
Sarasota-Manatee Campus | Rotunda

## Thursday, November 16

**Bull Market Tabling Event**  
10:00am-1:00pm  
Tampa Campus

**Urban (In)Flux: The Impact of Russian Emigres, Alliances, and Legacies on Urban Processes and Space in Tbilisi**  
6:00 pm-8:00 pm  
Tampa Campus | Patel Center

# INTERNATIONAL EDUCATION MONTH

Every year the University of South Florida celebrates the benefits of international education and exchange worldwide. Stay tuned for events happening virtually and across USF campuses.

For more information and updates, please visit:  
[tinyurl.com/IEM2021](https://tinyurl.com/IEM2021)



A joint initiative of the U.S. Department of State and the U.S. Department of Education



A joint initiative of the U.S. Department of State and the U.S. Department of Education

visit [USF.EDU/WORLD](https://USF.EDU/WORLD)



# Launched Bulls Run The World Monthly Newsletter

## June 2023



Inaugural Edition June 2023



### Welcome From USF World Vice-President Dr. Kiki Caruson



I'm proud to launch the inaugural USF World Newsletter following the momentous announcement that USF is now a member of the Association of American Universities (AAU), the most prestigious group of universities in higher education. This incredible honor reflects USF's remarkable rise in national rankings. This year, USF achieved its highest position ever in the U.S. News and World Report annual ranking of the best colleges in America. This marks the fourth consecutive year that USF has ranked among the nation's top 50 public universities and the first time USF has been recognized as among the top 100 of ALL universities.

USF World serves as the university's gateway to global engagement across its three campuses. We are proud to play a vital role in USF's reputation for student and faculty success, excellence in research, and mutually beneficial and high-impact local and global partnerships. My inspiration for the newsletter is to share the university's global impact with partners in Tampa Bay, the U.S. and across the world.

USF is the #1 destination in Florida for international student enrollment. 10% of our student body is comprised of international students who represent more than 140 countries. We not only receive students from all over the world, we encourage our students to travel abroad because we know how impactful an international experience is for career readiness and personal growth. USF is currently ranked 13<sup>th</sup> nationally among public universities for the number of students studying abroad.

We look forward to taking you on a global monthly journey sharing our programs, events, international alumni profiles and updates from over 45 USF faculty-led study abroad programs around the world! Be sure to check out our Global Networks and become involved in USF's activities no matter where you are -- we are global!

USF: America's Fastest Rising University

## July 2023



July 2023



### Update From The Vice President



I am proud to launch the first monthly USF World Newsletter following the extraordinary announcement that USF is now a member of the Association of American Universities (AAU), the most prestigious group of universities in higher education. I am also excited to share amazing highlights in this issue, including the generous \$25,000 contribution from the Regional Chancellor for the USF Sarasota-Manatee campus to establish the Karen and James Holbrook Study Abroad Scholarship. This gracious donation will increase access to study abroad opportunities for our students.

I'm particularly eager to showcase this month's feature story about an innovative collaboration between USF World, the Judy Censhaft Honors College, and the School of Interdisciplinary Global Studies in the College of Arts and Sciences, to create the USF D.C. Global Experience for 12 USF students. This program, designed to open doors to careers in international affairs for USF students, is an example of global learning here at home. The unique program was made possible with financial support from the USF World Advisory Council and members of the Tampa Bay community.

I'm also thrilled to report that Pri Phantadosi-Lima has joined USF from Brazil to coach the new USF beach volleyball team and we are excited to support her. Nearly a quarter of USF athletes are international students! We look forward to sharing news from our global athletes in future newsletters.

Stay connected with USF World and we will take you on a monthly global journey sharing our programs, events, international alumni profiles, and updates from over 45 USF faculty-led study abroad programs around the world! Be sure to check out our Global Networks and get involved with USF's activities no matter where you are -- we are global!

Dr. Kiki Caruson

World Class

## August 2023



August 2023



### Update From The Vice President



Welcome to the start of the 2023-24 academic year. I am pleased to share the August USF World Newsletter following a summer filled with extraordinary study abroad experiences spanning the globe from Ghana to Florence to Peru, and countless countries in between.

This month, we are showcasing the work of Professor Gofko Alexopoulos from the School of Interdisciplinary Global Studies. As director of the USF Institute for Russian, European and Eurasian Studies, she was awarded a \$700,000 U.S. Department of Defense grant to study Russian speakers in online spaces, Kremlin propaganda and internet usage patterns in Russia. We are proud of her contributions to U.S. national security.

I am also excited to highlight two global alumni features about a biomedical graduate turned actor in India and Los Angeles, and an engineering graduate who founded a successful construction firm in Colombia.

On behalf of my colleagues at USF World, we look forward to welcoming you to our programs and events throughout the year and to supporting the 5,000+ international students and scholars who call our campuses home. Furthermore, we encourage USF students to register for an incredible lineup of study abroad and virtual global learning programs this year.

Stay connected with USF World and we will take you on a global journey every month, sharing our programs, events, international alumni profiles and updates from over 45 faculty-led study abroad programs! Be sure to check out our Global Networks and get involved with USF's activities no matter where you, we are global!

Dr. Kiki Caruson

World Class

## September 2023



September 2023



### Update From the Vice President



I am pleased to share the September issue of the USF World Newsletter with you. This month, we are highlighting USF's remarkable summer study abroad programs. Our main story features the USF in London program which proved to be a memorable experience for the more than 100 students who participated. You will also find information about study abroad programs in Ghana, Japan, Panama, and Singapore.

Don't miss the feature spotlighting the work of inventor and professor Daniel Yeh from the Department of Civil Engineering, whose solar-powered HEWgenerator is providing innovative sanitation services in South Africa and India.

I'm also excited to share that we held two terrific events last month to welcome our incoming students and scholars from around the world. Be sure to look through the photos when you read about the International Student Welcome Reception and the Visiting and Fulbright Scholar event.

On behalf of my colleagues at USF World, we look forward to welcoming you to our programs and events throughout the year. Stay connected with USF World and we will take you on a global journey every month, sharing our programs, events, international alumni profiles and updates from over 45 faculty-led study abroad programs! Be sure to check out our Global Networks and become involved with USF's activities. No matter where you are, we are global!

Sincerely,  
Dr. Kiki Caruson

World Class

# GLOBAL ACADEMIC PARTNERSHIPS

## Partnership and Opportunity Development

Development of partnerships and projects across Europe, both within the EU and outside, including but not restricted to Spain, Germany, Portugal, Romania, Bulgaria, Italy, France, Czech Republic, Slovakia, Latvia, Lithuania, Estonia, Finland, Sweden, Ukraine, Georgia, Azerbaijan, Kazakhstan and Uzbekistan. Strategic partnerships can include models such as exchange, research and mobility, virtual global engagement, and articulation and progression programs. Opportunity now to create a "pitch" for a department or program that is circulated amongst Cormack network.

## International and Transnational Education Strategy Development

Assessing current priorities, objectives, partnership activities, capacity, structures, and processes as well as working with the senior management team to establish the aspirations of the institution in terms of models, volume of partnerships, and priority markets. Collaboration with academic departments to understand interest in and strengths for developing a strategy that achieves the unit's goals.

## Micro Hub Development

A partnership model based on using a US institution's online delivery capacity, and partnering that with an international counterpart, who can recruit and support students to study on their campus, but with the delivery coming from the US partner.



CORMACK  
CONSULTANCY  
GROUP

Internationalising Higher Education





# INTERNATIONAL TRAVEL



UNIVERSITY of  
**SOUTH FLORIDA**



# Global Travel Support and New Insurance Policy

USF has signed a service a new international support (International SoS) and international health and safety insurance policy (Gallagher is the broker and insurance is from Zurich).

Wider network of dedicated health and security professionals on-call around the world allowing for greater pre-travel advice, as well as monitoring of active medical, mental health, and security cases.

- Dedicated academic (vs. corporate) call number and chat options make it easier to get support.
- Stronger in-house security and risk services including traveler tracking (GPS monitoring attached to the ISoS app), push notifications to travelers regarding civil unrest, strikes, weather alerts etc., electronic check-ins etc.
- Additional mental health counseling services.
- Robust learning materials for travelers with 40+ modules to help prepare USF travelers for a safe and healthy trip. There are specific modules for student travelers, as well as modules focusing on identity-based security concerns, cybersecurity, avoiding kidnapping, malaria, etc.
- Insurance policy includes Trip Delay and Trip Interruption and a higher threshold of coverage (\$500K)

# Global Travel Support and New Insurance Policy

To be enrolled in the insurance, travelers need to register (Approved TR for business travelers) or coming to USF World for any travel involving students.

International SOS encourages calls to help prepare for travel:

Dedicated line for USF: +1 215-942-8478

When calling provide the USF Membership Number: **399GDA1018486IT**

Link to sign into Intl. SOS: <https://www.internationalsos.com/>

DOWNLOAD AND INSTALL THE INTERNATIONAL SOS APP:

<https://www.internationalsos.com/subscriber/assistance>

*SAVE the DATE*

October 10, 2023

4:00-5:00

Global Travel Townhall to  
learn more!



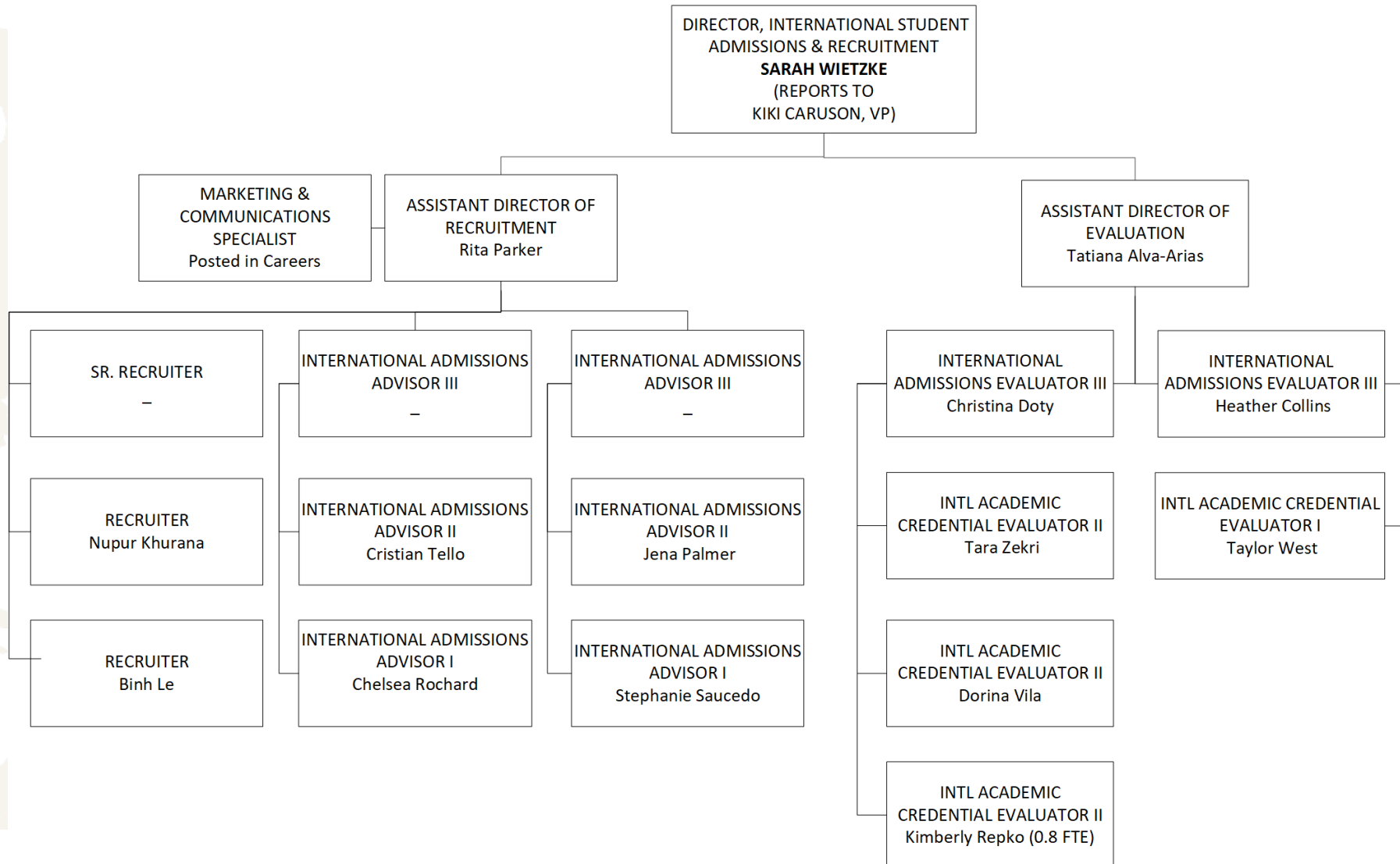
# **INTERNATIONAL STUDENT RECRUITMENT & ADMISSIONS**



UNIVERSITY of  
**SOUTH FLORIDA**

# INTERNATIONAL ADMISSIONS REORGANIZED

## INTERNATIONAL RECRUITMENT & ADMISSIONS



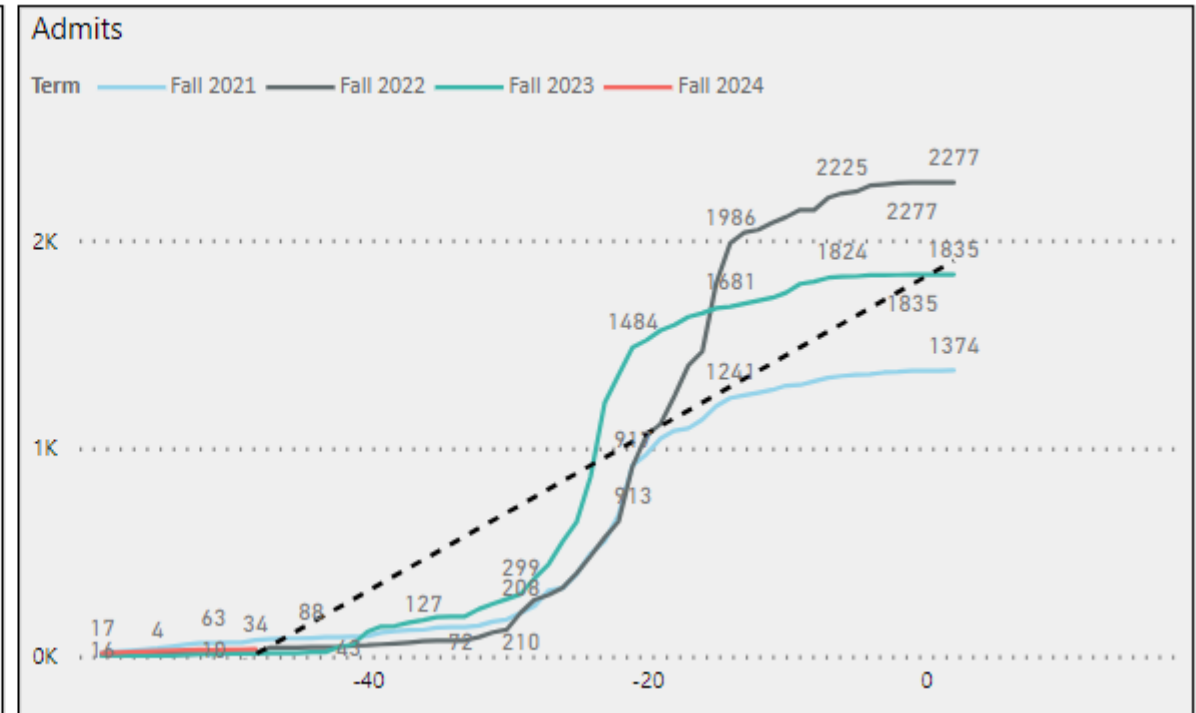
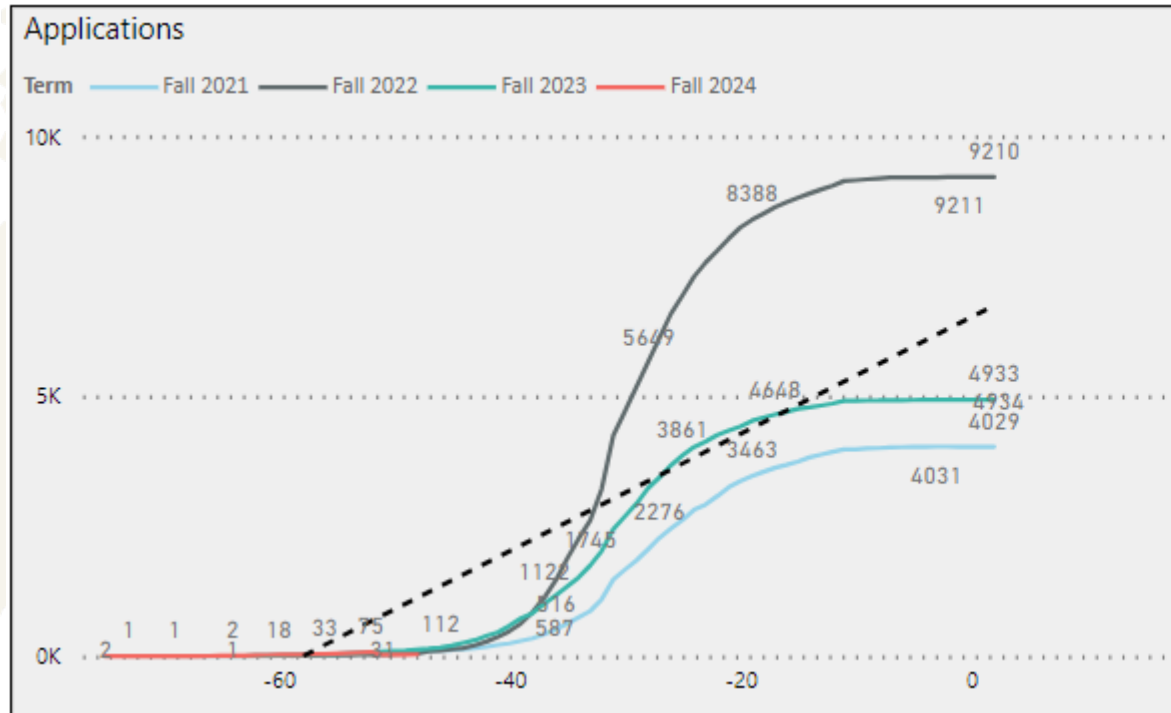
# “NEW” FTIC SUMMMER/FALL ENROLLMENT

Academic Year	Applicants	Admitted	Conversion	Deposited	AD Yield	Enrolled	AE Yield
20232024	7,139	1,946	27.3%	498	25.6%	435	22.4%
20222023	6,751	2,569	38.1%	868	33.8%	736	28.6%
20212022	3,762	1,610	42.8%	501	31.1%	491	30.5%
20202021	2,747	1,269	46.2%	371	29.2%	324	25.5%
20192020	2,227	968	43.5%	363	37.5%	306	31.6%

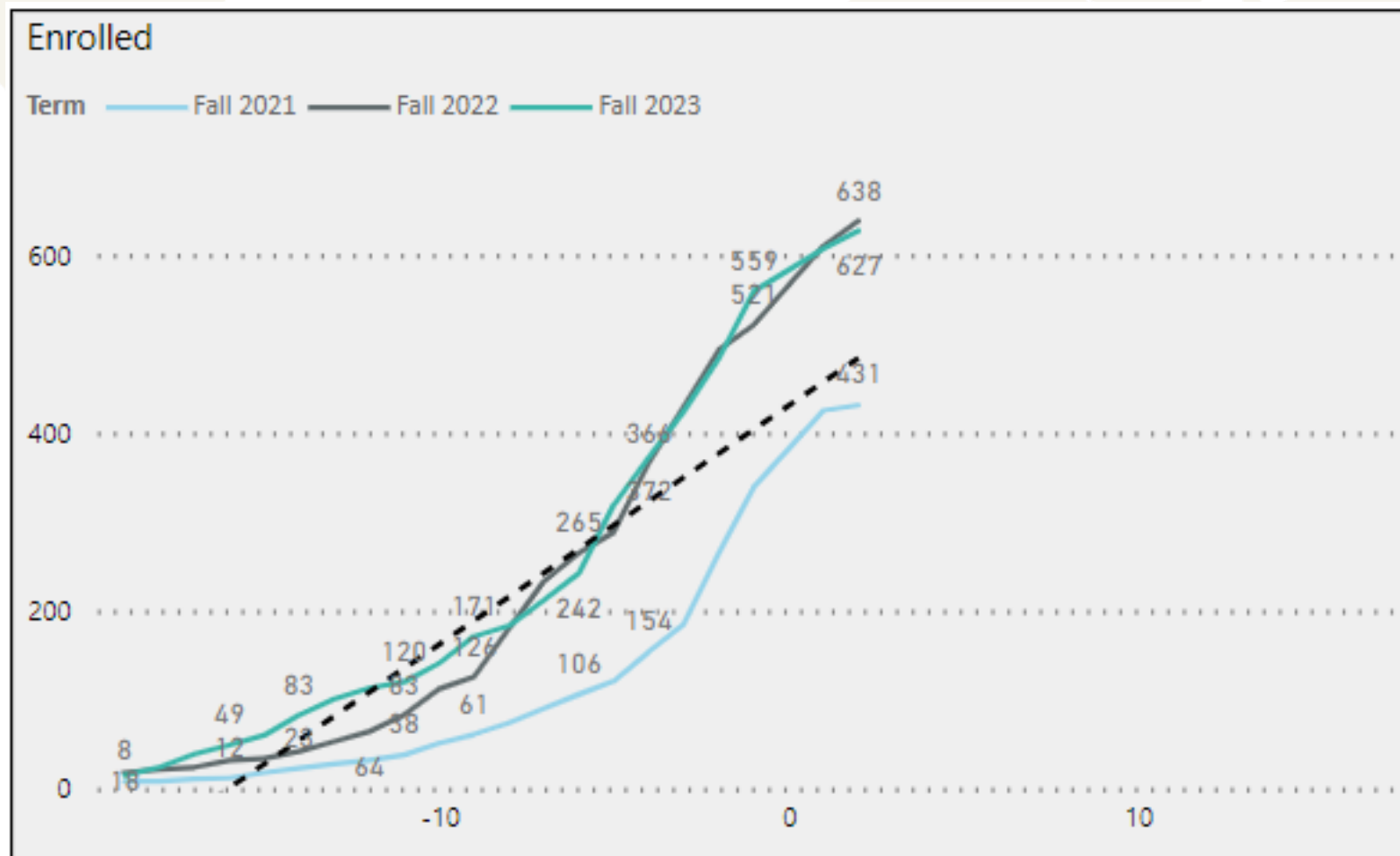
# “NEW” MASTERS – 3-YEAR FALL HISTORY

Type	Year	Apps	Admits	Admit %	Enrolled	Enroll %
In-State	2023	2,960	1,909	64.5%	1,463	76.6%
	2022	2,972	1,978	66.6%	1,549	78.3%
	2021	3574	2222	62.2%	1656	74.5%
Out-of State	2023	2,415	734	30.4%	288	39.2%
	2022	2,373	877	37.0%	314	35.8%
	2021	2685	1090	40.6%	404	37.1%
International	2023	6245	2314	37.1%	743	32.1%
	2022	10615	2831	26.7%	795	28.1%
	2021	4891	1752	35.8%	547	31.2%
Total	2023	11,620	4,957	42.7%	2,494	50.3%
	2022	15,960	5,686	35.6%	2,658	46.7%
	2021	11,150	5,064	45.4%	2,607	51.5%

# MCOB & ENG INTERNATIONAL 4-YEAR FALL HISTORY



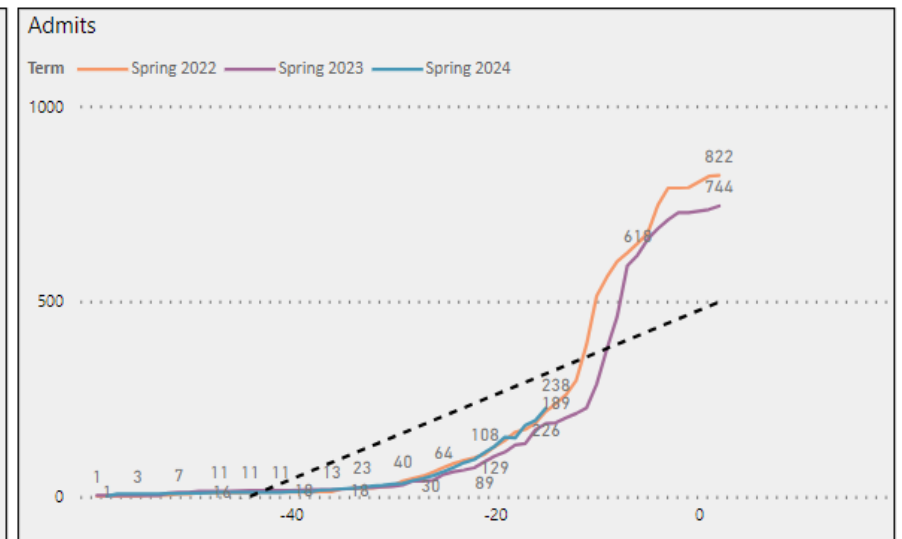
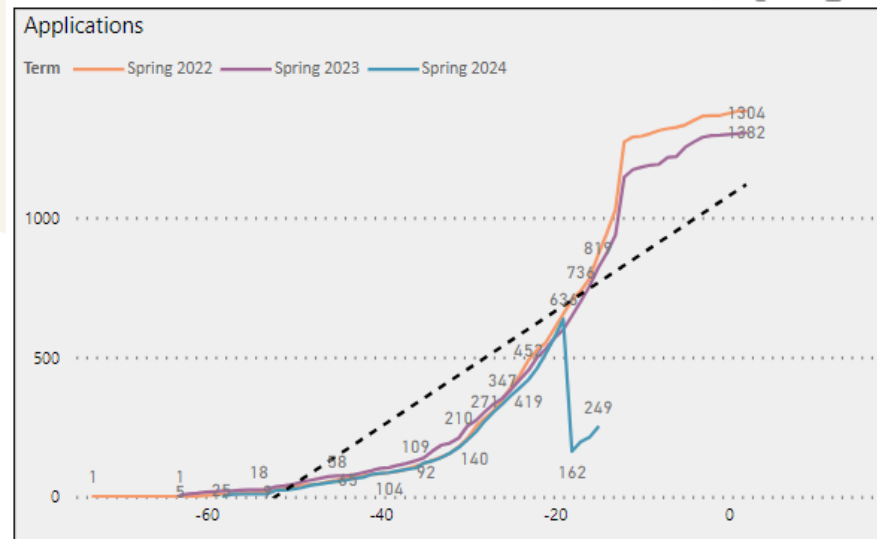
# MCOB & ENG INTERNATIONAL 4-YEAR FALL HISTORY ENROLLMENT



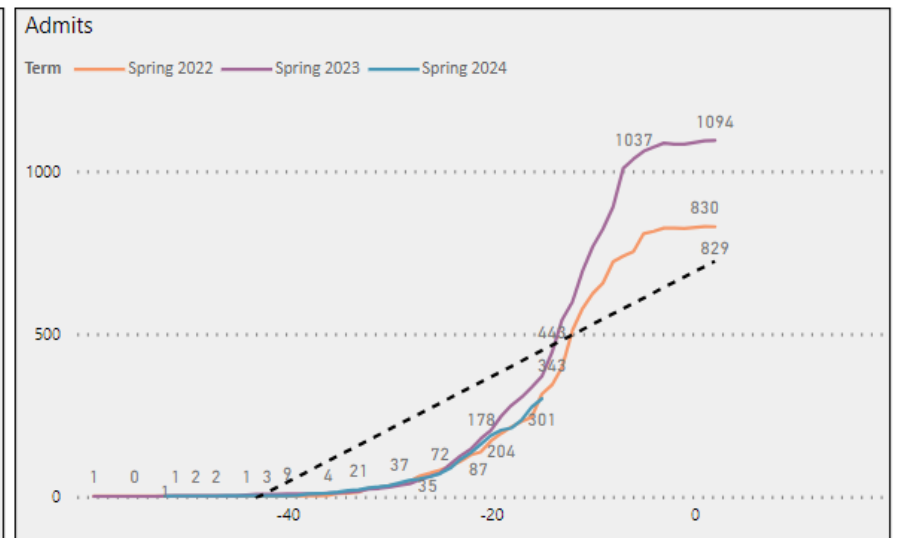
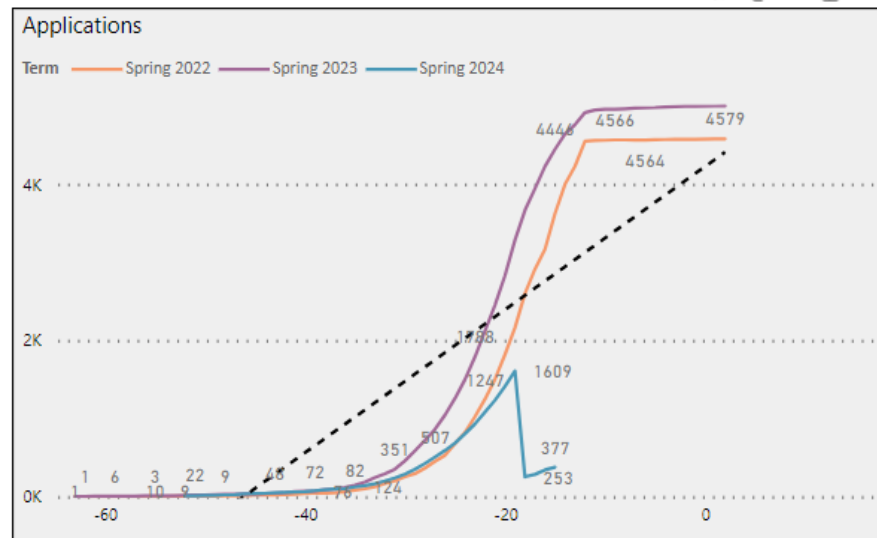


# SPRING 2024 MASTERS (All Degrees)

## DOMESTIC



## INTERNATIONAL



# FALL 2024 DISCUSSION

- Transition year (leadership, department change to USF World, short staffed, largest application class, loss of 2 key employees on INTL eval team – retraining, SSAR)
- Focus on improving customer service, especially response time
  - Systems (automating processes, fixing issues that create extra work)
  - Evaluation (team now fully trained and staffed)
    - Transfer applicants now do not need an external evaluation – done in house
    - Freshman applications are done in-house
  - Recruitment (team now mostly staffed and trained)
    - Travel/recruitment events so far this Fall: India, Vietnam, and Brazil
    - Employees based in market (1 in Delhi, 1 in Ho Chi Minh City)
    - Started offering weekly info sessions, re-claimed INTL phone number, office located in FAO
- Agent contracts for Undergraduate Enrollment only approved at this time.
  - Roll out has been slower than hoped due to legal contracts, purchasing process, training.
    - Agents are required to be AIRC Certified or ICEF Certified Agency Status.
    - Strategic initial roll-out to agents that enrolled 5+ students for Fall 22.
    - Trying to limit Fall 2024 to 25 agents in strategic markets for diversity.
- INTO University Partnership Teach out (8 grad students, zero undergraduate)
- RNL meetings and possible impacts on scholarships.
  - Not publishing FTIC scholarship criteria
  - LAC

# ENROLLMENT MANAGEMENT

RNL Consulting providing guidance to four subcommittees that compose the Strategic Enrollment Planning Committee with recommendations for how to improve our recruitment and retention of students from Florida and from outside of Florida (out of state and international)

- Undergraduate Recruitment
- Undergraduate Student Success
- Academic Excellence at the Undergraduate Level
- Graduate Recruitment

## Goals Specific to International Student Recruitment

UG – Maintain a diverse and talented international student body

UG – Evaluate the use of scholarships with the goal of utilizing these tools to attract the best students

UG – Comprehensive “onboarding” on international students

GR – Clarify the roles and responsibilities associated with the recruitment, yield, and retention of Master’s level students

GR – Increase the diversity of the graduate level student body – we are overly reliant on India market



# **INTERNATIONAL STUDENT SUCCESS**



UNIVERSITY of  
**SOUTH FLORIDA**

# INTERNATIONAL STUDENT SUCCESS CENTER

## Phase I

- Focus on assisting international students' successful onboarding and transition
- Webinars for incoming students on steps for successful start
  - Systems (logins and usage)
  - Processes (immunizations and medical history, registration, orientation)
  - Arrival (getting to campus, where to live)
  - Navigating policies both on-campus and off-campus
- Adjustment to the US/USF/Tampa Bay
- Identifying resources for students
  - Feed-a-Bull, Local INTL support, campus clubs & organizations
  - Educational events on safety, areas of concern, and stress/homesickness
    - e.g. Hurricane Safety, DeStress Fest, Bicycle-Pedestrian-Auto Safety
- Coordination of services and support offered across OneUSF

# INTERNATIONAL STUDENT SUCCESS CENTER

## Phase II

- FAO 100 – former INTO USF space
  - Dedicated seminar rooms, study space, and areas to relax and connect
- Support for current students, faculty and staff on navigating INTL challenges
- Multilingual Writing Center
  - offering one-on-one writing consultations to international and/or multilingual **USF graduate students** from any field
- Engagement events to connect international and domestic students socially
- Hosting space for small events for internationally-focused clubs and departments
  - e.g. ISA meetings, chat corners, department talks
- Looking for more input from departments – how can we help serve?



# OFFICE OF INTERNATIONAL SERVICES



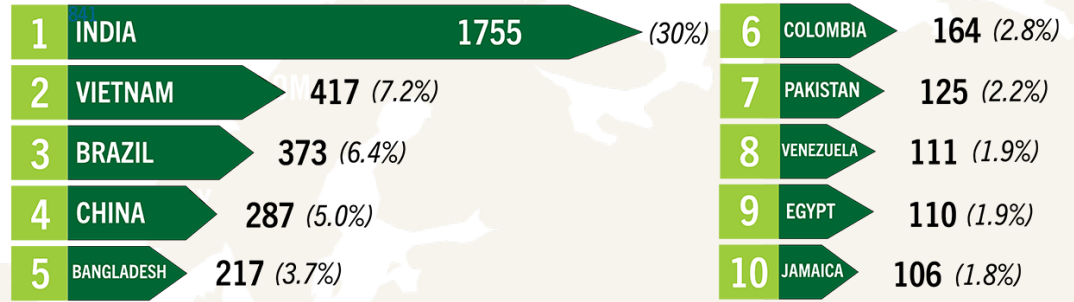
UNIVERSITY of  
**SOUTH FLORIDA**

## FALL 2023 ENROLLMENT

**5,788** from **141**  
international students countries

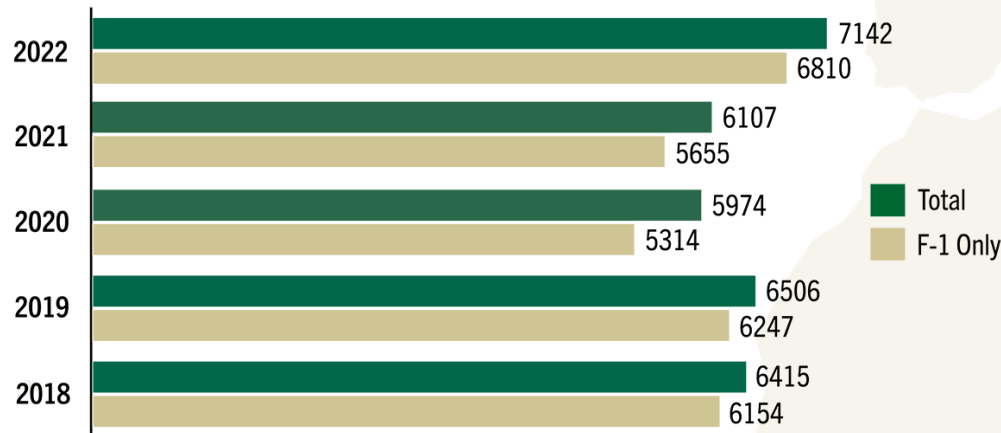
comprising  
**11%**  
of the student body

## TOP 10 COUNTRIES FOR FALL 2023 ENROLLMENT



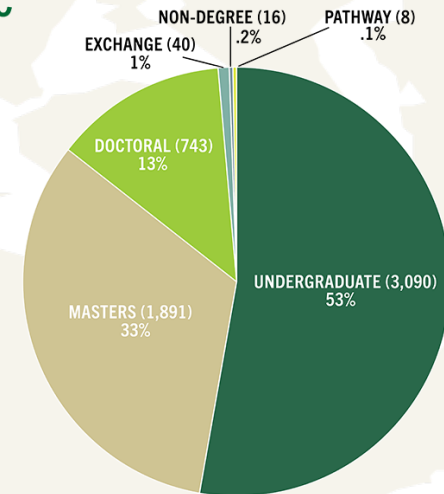
## INTERNATIONAL STUDENT & OPT COUNT

BASED ON PREVIOUS FALL SEMESTER HEADCOUNT



## BALANCED ACADEMIC ENROLLMENT

SOURCE: USF INFOCENTER  
ADD/DROP BENCHMARK  
8/28/2023





# HOW STUDENTS CONTACT OIS

## OIS Walk-In Hours in BEH255

Mondays – 1-2pm

Tuesdays – 1-2pm

Wednesdays – 1-2pm

Thursdays – 2-4pm

Fridays – 1-2pm

## Virtual Drop-In via Teams (sign up via eform in iStart)

Mondays – 11am -1pm

Tuesdays – 11am – 1pm

Wednesdays – 11am – 1pm

Thursdays – 1-2pm

Fridays – 11am – 1pm

## Walk-In Hours at other campuses:

### St Petersburg PMN 102

10am to 12pm and 1:30 to 3pm:

September 20

October 4

October 18

November 8

November 22

December 6

### Sarasota-Manatee B-222

10am to 12pm and 1:30 to 3pm:

September 26

October 10

October 24

November 14

November 28

December 12

## OIS Advising Team Emails:

New Students – [globullstart@usf.edu](mailto:globullstart@usf.edu)

Current Students – [f1status@usf.edu](mailto:f1status@usf.edu)

Practical Training – [cptopt@usf.edu](mailto:cptopt@usf.edu)

J-1 Scholar/Student – [j1visa@usf.edu](mailto:j1visa@usf.edu)

Website: <https://www.usf.edu/world/international-services/>

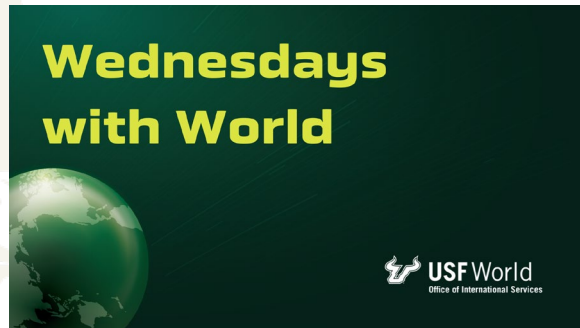


## All COVID Flexibilities Ended – Return to Pre-COVID rules

- F-1 and J-1 students should be in mostly face-to-face courses.
  - Coded in-person or HB (hybrid)
  - NOT online or PD
- Students can only count one 3 credit hour online course towards full-time requirements.
- I-20's cannot be issued for mostly online programs.
- Home campus matters
  - Only campus for on-campus employment
  - Should be majority of courses
- Cannot be F-1 outside the US unless in official study abroad or research abroad approved by OIS.
  - Research Abroad must be necessary to program.

# Visiting Scholar Success

Scholar Newsletter



Visiting Scholar Research Symposium

Visiting Scholar Spotlight

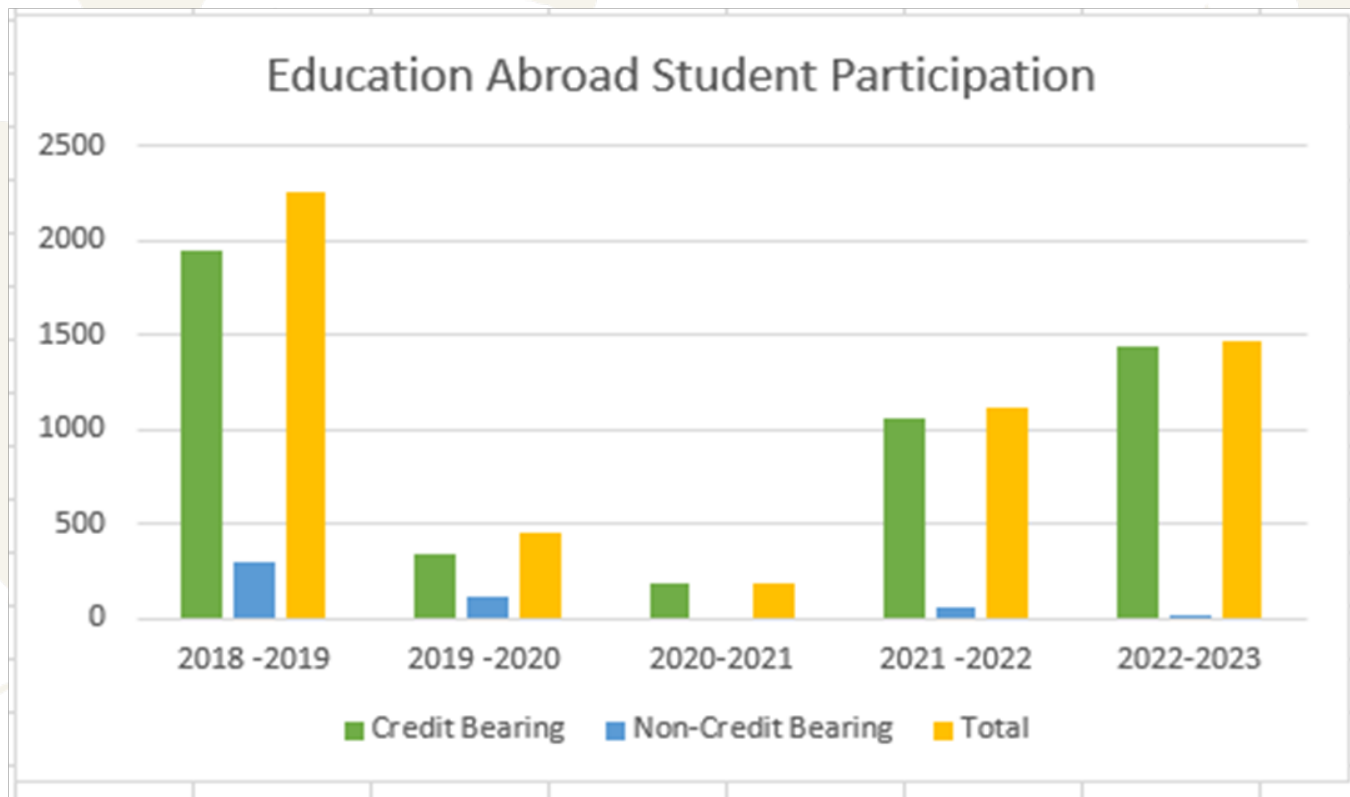
# EDUCATION ABROAD



UNIVERSITY of  
**SOUTH FLORIDA**

# 2022/23 PARTICIPATION IN OUTBOUND MOBILITY

	2018 -2019	2019 -2020	2020-2021	2021 -2022	2022-2023
Credit Bearing	1953	344	186	1054	1443
Non-Credit Bearing	301	108	0	56	20
Total	2254	452	186	1110	1463



## Overall

31.8% Increase over last year  
65% of where we were in 2018-19

## For Credit

36.9% Increase over last year  
73.9% of where we were in 2018-2019

# 23/24 PROGRAM OPTIONS

**45**

Faculty-led programs

**30-40**

Exchange opportunities

**100s**

Affiliate options around the world



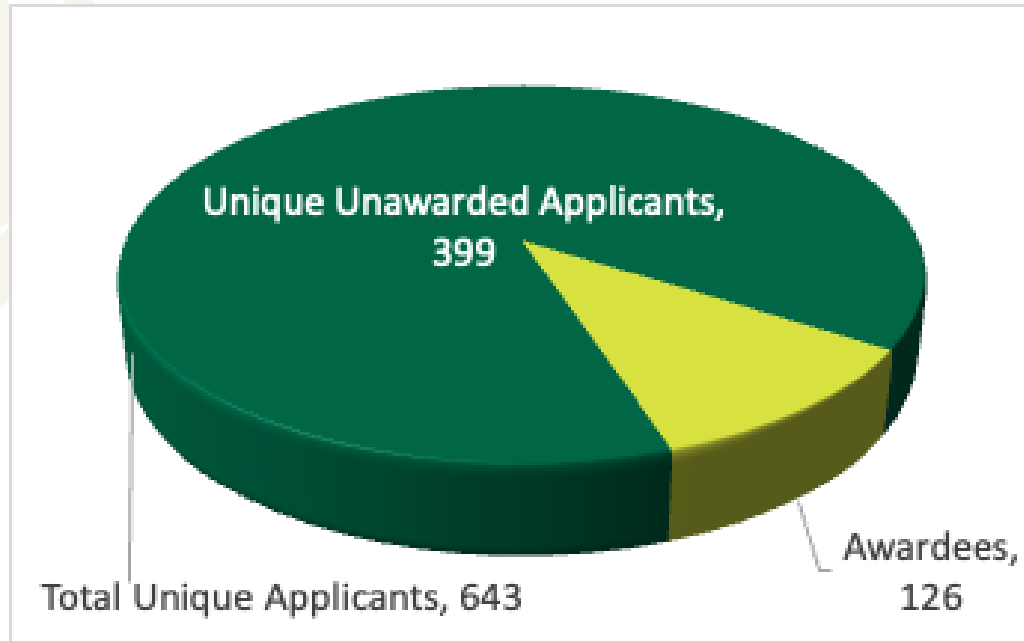
# 24/25 CALL FOR PROPOSALS

- Proposals for faculty-led programs: September 29th
- Due to EAO January 31st
- Selections announced in March
- Development Period March – August
- Maymester and Spring Break



# EAO Scholarships

## Award Year 2023 – 2024 Summary



**\$184,000**

**16.67%**



# EAO Scholarships

## Award Year 2024 – 2025 Schedule

- Spring 2024 Applications (tentative)
  - Open November 27th
  - Close December 9th
- Summer 2024 Applications
  - Open January 1st
  - Close February 15th
- Fall 2024 Applications
  - Open June 1st
  - Close June 18th

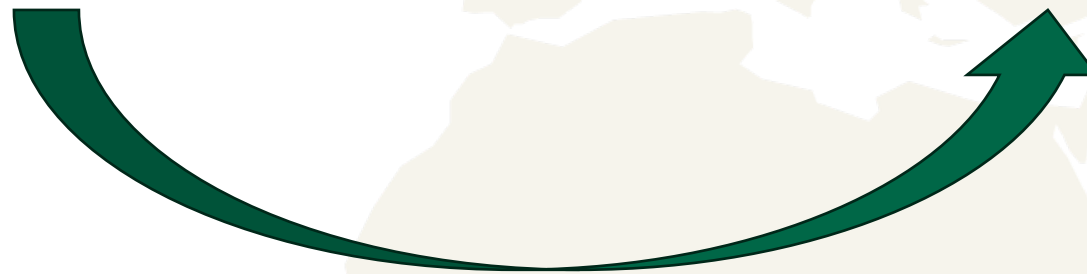


Reviewers  
Needed!

# Going Places Transition



WORDPRESS





# VIRTUAL GLOBAL LEARNING



UNIVERSITY of  
**SOUTH FLORIDA**

# VIRTUAL GLOBAL EXCHANGE (VGE)

## Virtual Global Exchange Learning Community

### What

USF World is collaborating with CITL to deliver a Virtual Global Exchange (VGE) program to the USF community. This program is offered virtually and takes the form of a workshop series, Canvas course and learning community.

### When

Program meets every 3 weeks for 2 hours (September 2023 – April 2024)

### Who

Full-time faculty

### Overview

Each participant will receive a digital badge by actively participating in and completing the year-long program (workshops, partnering events, and course design). Faculty will be eligible to receive \$1200 upon earning the badge and implementing at least a four-week VGE component in a USF course in summer or fall semester 2024.



### Facilitators:



**Nazek Jawad, Ph.D**

Adjunct Faculty & Learning and Development Facilitator



**Russell Clayton, Ph.D**

Associate Professor of Instruction in Business  
Muma College of Business

# GLOBAL TECH EXPERIENCE



## Get real-world experience.

The Global Tech Experience makes it simple to supercharge your major and resume.



[www.globaltech.usf.edu](http://www.globaltech.usf.edu)



## Choose your Track. Expand your opportunities.

 Digital Marketing

 Coding for Web

 Data Analytics

### Exposure to Practical Work

Watch asynchronous video lessons, then connect with teammates in Global LiveLabs (interactive sessions over Zoom) to collaborate on real-world challenges using industry tools.

### Stand Out to Recruiters

Badges get you the big interview. A portfolio gets you the job. Showcase your experience with an impressive digital portfolio of all your hard work.

### Join a Vibrant Community




Networking comes built-in. Expand your contacts and reach out to a dedicated team of professionals committed to your long-term career success.

### Credit Where Credit's Due

Gain industry-recognized credentials for your resume and LinkedIn.

Add experience to your resume with projects from global companies such as:



-  All majors welcome. No pre-requisites required.
-  Gain exclusive access to the tools top global companies use every day.
-  Become part of an alumni network of over 5,000 program graduates, with a 94% approval rating.
-  24/7 HelpHub support from subject matter experts and a chatbot powered by Open AI technology.



# GLOBAL RESEARCH & DATA REPORTING



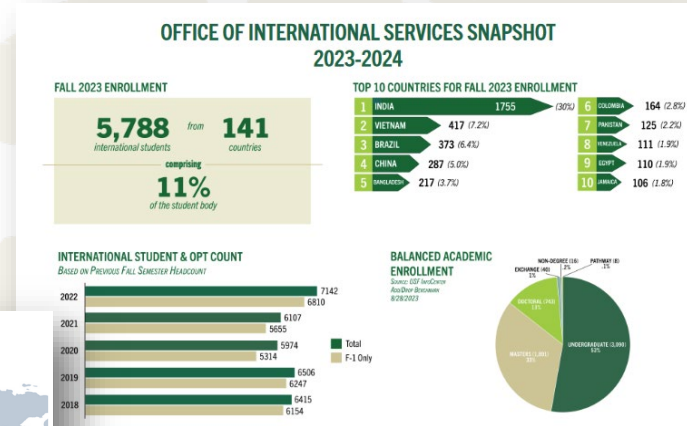
UNIVERSITY of  
**SOUTH FLORIDA**

# REPORTING PAGE OF THE USF WORLD WEBSITE

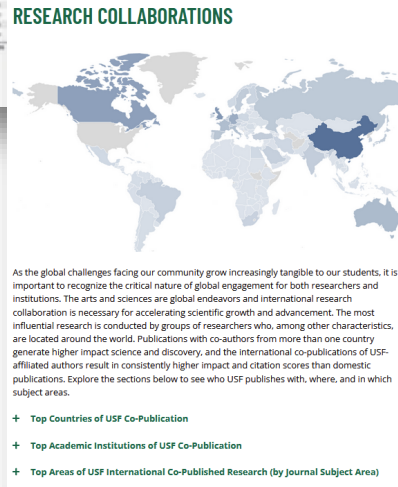
<https://www.usf.edu/world/about/reporting.aspx>



College Dashboard



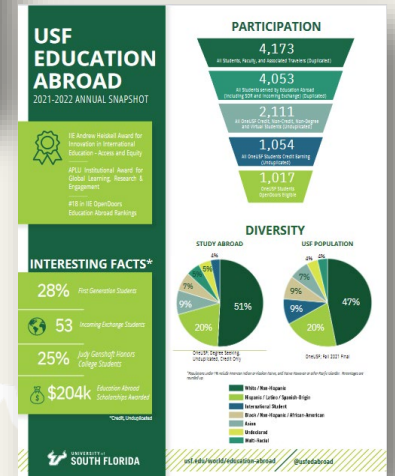
Unit Snapshots



Research Information



Annual Report



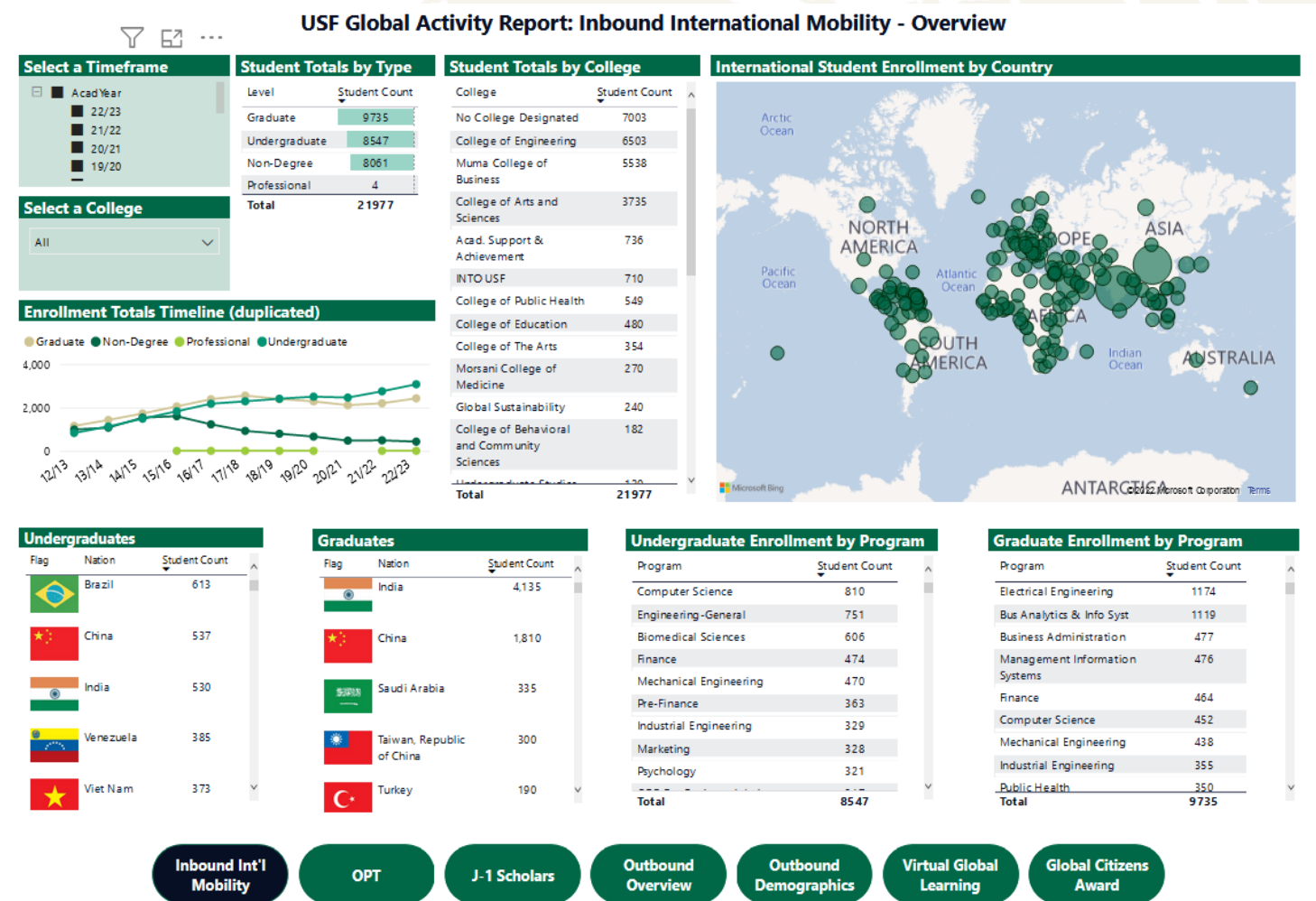
# COLLEGE GLOBAL ENGAGEMENT REPORTS GO LIVE!

Sortable by Academic Year/Semester and College (EdAbroad data for 22/23 is not yet available)

Tabs available for global student enrollment, OPT, J-1 scholars, outbound student mobility, virtual global learning, and Global Citizen's Award

Data NOT yet available live:

- Fulbright recipients
- International scholarships/awards
- Global travel through TAR reporting
- Faculty bibliometrics
- Partnerships
- Peace Corps Prep data





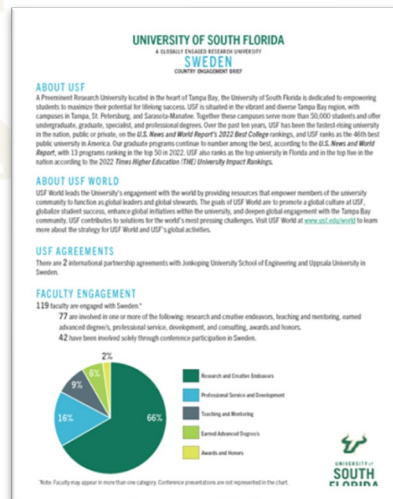
# CUSTOMIZED REPORTS AVAILABLE

Most reports identified below are for USF-aggregate information. College or Unit-level summaries can be discussed upon inquiry.

Reports available upon inquiry and at least a week in advance:

- Country Engagement Briefs
- International research bibliographics
  - Research area, Top performers, Top institutional partners, Top countries of collaboration, peer comparisons/benchmarking
- Global Discovery Hub Summaries
- International Travel Summaries

Contact: [lkthomas@usf.edu](mailto:lkthomas@usf.edu)



## Faculty Global Research Collaboration

From 2018–2022, USF had **7,693** International Collaborations across **179** countries accounting for **58%** of all citations. But only **1/3** of total publications (23,423)

From 2018–2022, USF had **394** funding agencies across **56** countries contributed to **2,712** publications\*

\*This is only 34.5% of total funded publications and had an average citation impact of 2.6

Subject Area	No. of Publications
Biochemistry & Molecular Biology	432
Multidisciplinary Chemistry	393
Electronic & Electrical Engineering	381
Multidisciplinary Materials Science	377
Environmental Science	375
Immunology	355
Clinical Neurology	323
Oncology	319
Neurosciences	294
Public, Environmental, & Occupational Health	288

	All Citations & Impact Score	Internal Citations & Impact Score	Domestic Citations & Impact Score	Int'l Citations & Impact Score
2022	6,242 1.38	511 0.81	2,279 1.06	3,290 2.12
2021	18,821 1.34	1,341 0.77	6,602 1.08	10,266 1.82
2020	39,834 1.32	2,936 0.8	13,397 1.11	22,838 1.97
2019	54,534 1.33	4,334 0.87	17,772 1.08	30,445 1.87
2018	76,546 1.6	5,746 0.77	24,159 1.27	45,009 2.74

All data from Clarivate InCites



# USF Health



UNIVERSITY of  
**SOUTH FLORIDA**

# VIRTUAL GLOBAL ENGAGEMENT

## Global Health Conversation Series planned for Fall 2023:

September 26 – Dr. Mbacham and Dr. Nji. Moderated by Dr. Gillian Stresman from COPH

- The dual burden of infectious and chronic diseases from a systems perspective using malaria as a case study

## Upcoming Global Health Conversation Series

- October 10, Dr. Vallario from African Bible Collage Hearing Clinic in Malawi and Dr. Zach Porterfield from MCOM
- November GHCS to be announced

## Upcoming Student Global Health Conversation Series

- October 12<sup>th</sup> – International Medical Scholarly Concentration students with Dr. Joseph Huang at E-Da Hospital in Taiwan and some of his medical students



USF Health International  
USF Health International Presents

### GLOBAL HEALTH CONVERSATION SERIES

*The dual burden of infectious and chronic diseases from a systems perspective using malaria as a case study*

**Tuesday, September 26, 2023**  
9:00am—10:00am EDT



**Wilfred Mbacham, MS, DS, ScD**  
President, Fobang Institutes for Innovations in Science & Technology  
Coordinator, Graduate Programs  
Unit for Life Sciences and Biology of Organisms  
University of Yaoundé



**Akindeh Nji, MSc, PhD**  
Lecturer of Biostatistics  
Head of the Clinical and Laboratory Data Management Unit  
Biotechnology Center  
University of Yaoundé

Dr. Mbacham Wilfred holds a bachelor's degree in Zoology and a Doctorate in Molecular Parasitology from the University of Yaoundé I and a Doctor of Science Degree in Tropical Public Health from Harvard University. He is a researcher at the Biotechnology Center (BTC) and teaches at the Faculty of Science and of Medicine and Biomedical Sciences of the University of Yaoundé I. Dr. Mbacham is a fellow of the Cameroon Academy of Sciences and African Academy of Sciences. His current research focuses on pharmacogenomics and response to drugs, the molecular diversity, and epidemiology of drug resistance in Malaria, HIV, and Tuberculosis. Additionally, Dr. Mbacham has developed the Pro.P.A.S.T.E.U.R., a philosophy that popularizes and integrates platforms/techno-poles for biosciences, physical sciences, and research-uptake.

Dr. Akindeh Nji holds a Master of Science in Applied Statistics from Centrum University Limburg (today The University of Hasselt), Belgium and a PhD in International Health-Medical Research from Ludwig Maximilian University (LMU), Munich, Germany. He is a senior lecturer of biostatistics in the Department of Biochemistry at the University of Yaoundé I, Cameroon. As Head of the Clinical and Laboratory Data Management Unit at the Biotechnology Center of the University of Yaoundé I, Akindeh has played a major role in the design and running of four clinical trials on anti-malarial drugs. Additionally, he has been a consultant clinical data monitor for WHO-sponsored clinical trial with sites in Ethiopia and Nigeria. His expertise in study design, and experimental studies, including KAP studies, and research methodology gave him the opportunity to sit on two ethics Committees in Cameroon. He is a member of the Society of Epidemiology Cameroon (CaSE) and the Network of Modelers in Tropical Diseases (TDMOD).



**Moderator:**  
**Gillian Stresman, PhD, MHS**  
Assistant Professor  
College of Public Health  
University of South Florida

Click [HERE](#) to register



Please forward this email to your colleagues across the world

# GLOBAL PROGRAMS

## Study Abroad

5 programs have been approved for 2024 and 1 for Fall 2023

- Panama (2 programs in COPH)
- Japan (Undergraduate Public Health in Japan)
- Canada (Undergraduate Public Health in Canada)
- Colombia (Nursing program (Fall 2023 and Spring 2024))

3 additional programs are under review for

- Panama
- Ghana

Additional programs for 2025

- Italy
- Colombia



## Projected Student Global Engagement

Anticipating 30 students from MCOM to travel for an International shadowing and summer research

Anticipating 24 students from COPH to travel abroad for their International Field Experience and an additional 10 for research

60+ for USF Health led Study Abroad programs

65+ for student global service learning

Anticipating an increase in overall conference travel

# Language and Culture Programs

## Virtual Language Exchange

- 50 Medical Students from USF and 50 from UNAM



Facultad de Medicina



## In-Person Medical Spanish Elective

- Program for medical Spanish at Universidad CES. 7 students traveling in January for an elective course.
- Program for medical Spanish for faculty Universidad CES



**UNIVERSIDAD CES**  
Un compromiso con la excelencia



# STRATEGIC INTERPROFESSIONAL COLLABORATIONS

## Africa

### Ghana

- University of Ghana

### Sierra Leone

- COMAHS
- CHAMPS

### South Africa

- University of KwaZulu-Natal, Durban

### Uganda

- One City Ministries

## Latin America

### Colombia

- Universidad CES
- Uninorte

### Mexico

- UNAM

### Panama

- City of Knowledge
- Senacyt
- Universidad de Panama

### Peru

- Socios en Salud

## Asia

### India

- MAHE (Manipal Academy of Higher Education)

### Japan

- GIFU University

### Thailand

- Chulalongkorn University
- Mahidol University

## 97 Collaborations in 40 countries



**16 New Agreements**  
**22 Clerkship Agreements**  
**9 Renewals**



# Upcoming Strategic Interprofessional Partnerships

## Italy

- New Clerkship Agreement with University of Sapienza in Rome. This may also serve as a site for a VGE course with the College of Public Health
- University of Kore and University of Catania

## France

- Institute Pasteur
- Paris Cite

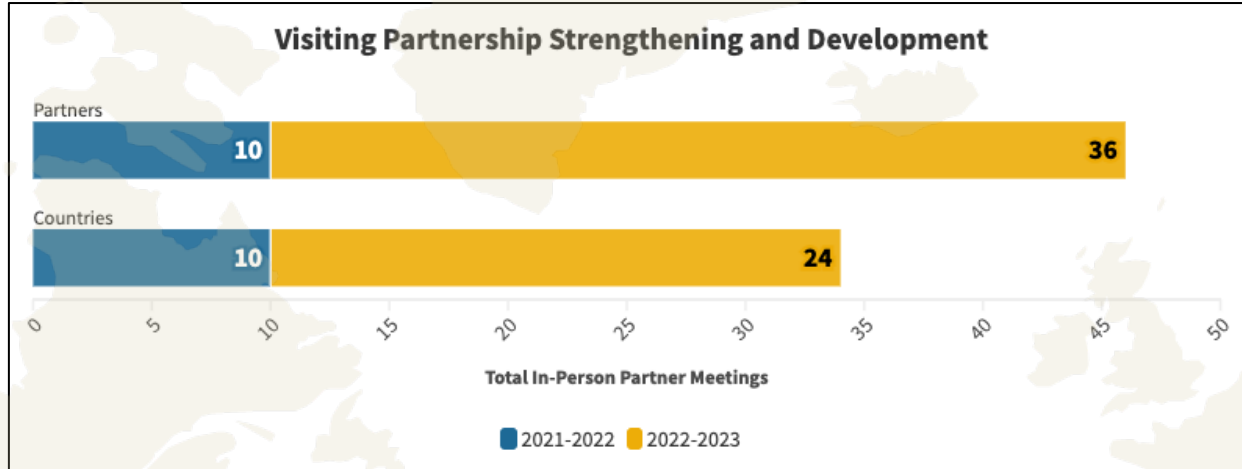
## Colombia

- Universidad de Cartagena
- New partnership with Hospital Serena del Mar with Universidad de Cartagena

## Mexico IMSS (Mexican Social Security System) – CAMLS – USF Health

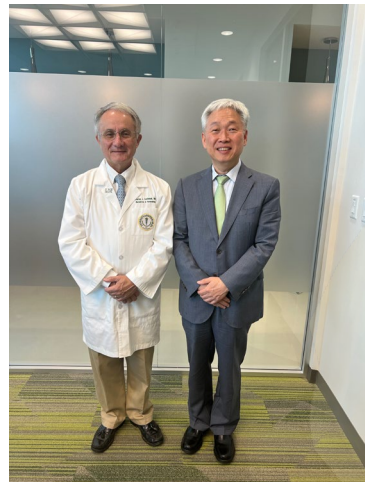
- 1500 hospital network

# Delegations at USF Health



## Upcoming delegation visits

- Mexico - UNAM Faculty of Medicine
- South Korea - Yeungnam University
- Japan - GIFU University







# INTERNATIONAL COMMUNITY RELATIONS



UNIVERSITY of  
**SOUTH FLORIDA**

# GLOBAL NETWORKS

## USF NETWORK BRAZIL

USF Network Brazil's membership is thriving with over 600 alumni and more than 370 currently enrolled students. The currently enrolled student population is one of the most prominent and engaged on-campus. Since 2017, over 125 faculty members have been engaged in research, business, or creative endeavors in Brazil. The Network welcomes the 75+ students who have studied abroad in Brazil since 2013.

600+  
Alumni

370+  
Students

125+  
Faculty

75+  
Study abroad

SCAN TO JOIN OR VISIT:



<https://tinyurl.com/networkbrazil>



## USF NETWORK THE CARIBBEAN

USF Network the Caribbean comprises 24 Caribbean countries and territories and has a remarkable presence at USF. This Network's membership is one of the most extensive and diverse, with more than 1190 alumni and over 300 currently enrolled students. The currently enrolled student population is one of the most engaged on-campus as they have the largest number of distinct student organizations. There are over 180 faculty members who have engaged in research, business, or creative endeavors in the region since 2017. The Network welcomes the 1,462 students who have studied abroad in the Caribbean since 2013.

24  
Countries

700  
Alumni

300+  
Students

184  
Faculty

SCAN TO JOIN OR VISIT:



<https://tinyurl.com/networkcaribbean>



## USF NETWORK COLOMBIA

USF Network Colombia's membership is growing every year, with over 470 alumni and more than 160 currently enrolled students. Part of this success is due to USF's fruitful and longstanding partnership with Universidad del Norte, which has produced generations of Colombian Bulls! There are over 40 faculty members who have engaged in research, business, or creative endeavors in Colombia. The Network welcomes the 47 students who have studied abroad in Colombia since 2013.

470+  
Alumni

160+  
Students

40+  
Faculty

45+  
Study abroad

SCAN TO JOIN OR VISIT:



<https://tinyurl.com/networkcolombia>



## USF NETWORK FRANCE

USF Network France's membership is impressive with over 480 alumni and over 20 currently enrolled students. More than 125 faculty members have been engaged in research, business, or creative endeavors in France. USF's study abroad programs in France are among the most popular and successful and the Network welcomes membership for the 890+ study abroad students who have participated since 2013.

480+  
Alumni

20+  
Students

125+  
Faculty

890+  
Study abroad

SCAN TO JOIN OR VISIT:



<https://tinyurl.com/networkfrance>



## USF NETWORK INDIA

USF Network India's membership is the largest at the University with over 3,100 alumni and more than 1,550 currently enrolled students. Furthermore, 113 faculty members have engaged in research, business, or creative endeavors in India since 2017. The Network welcomes the 210 students who have studied abroad in India since 2013.

3190+  
Alumni

1550+  
Students

110+  
Faculty

210+  
Study abroad

SCAN TO JOIN OR VISIT:



<https://tinyurl.com/networkindia>



## USF NETWORK SAUDI ARABIA

USF Network Saudi Arabia's membership is thriving with over 650 alumni and 118 currently enrolled students. Since 2017, 37 faculty members have engaged in research, business, or creative endeavors in Saudi Arabia. The Network welcomes the 5 students who have studied abroad in Saudi Arabia since 2013.

650+  
Alumni

118  
Students

35+  
Faculty

5  
Study abroad

SCAN TO JOIN OR VISIT:



<https://tinyurl.com/networksaudi Arabia>



## USF NETWORK THE UNITED KINGDOM

USF Network the United Kingdom's membership is thriving with over 680 alumni and 45 currently enrolled students. There are also 230 faculty members who have engaged in research, business, or creative endeavors in the region since 2017. USF's UK study abroad programs are among the most popular and successful at the university. The Network welcomes the 1,780+ USF in London study abroad students since 2013.

680+  
Alumni

47  
Students

230  
Faculty

1780+  
Study abroad

SCAN TO JOIN OR VISIT:



<https://tinyurl.com/networktheuk>





# Q & A



UNIVERSITY of  
**SOUTH FLORIDA**



UNIVERSITY of  
**SOUTH FLORIDA**